

Operator (Report): ZetaView

Video Operator: ZetaView

Sample Parameters

Sample Name: ps
 Comment: ZP PS100nm, Sample Remarks0:
 Sample Remarks1:
 Sample Remarks2:
 Electrolyte: PBS
 Temperature: 22.56 °C sensed
 pH 7.0 entered
 Conductivity: 1.00 µS/cm sensed

Result (sizes in nm)

	Number	Concentration	Volume
Median (X50)	106.6	106.6	121.8
Span	26.4	26.4	60.7
Concentration:	6.3E+7 Particles / mL		
Dilution Factor:	250000		
Original Concentration:	1.6E+13 Particles / mL		

Measurement Parameters

Cell S/N: CA16-122-0096

Quality

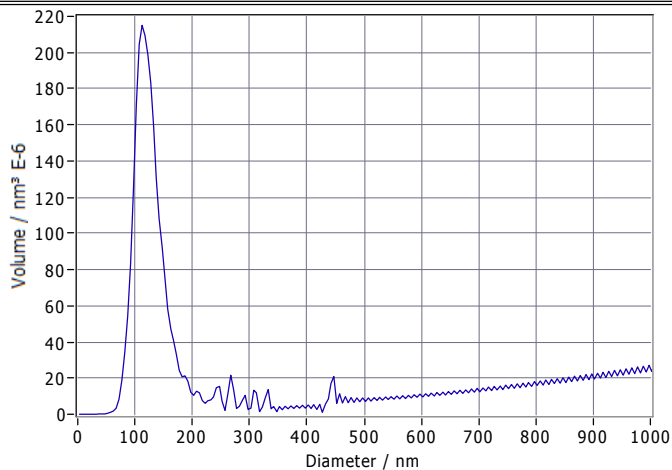
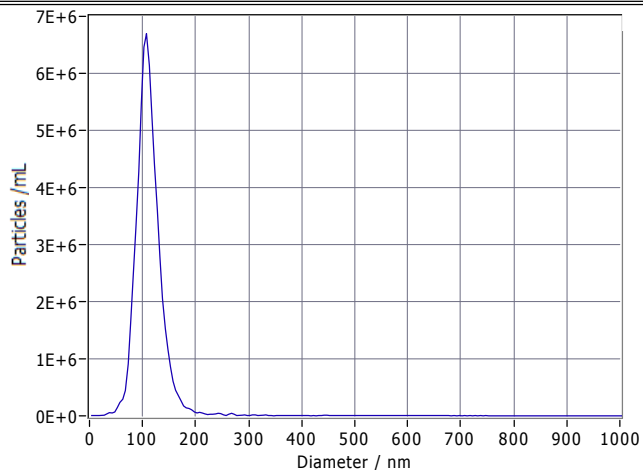
Average Counted Particles per Frame: 183
 Number of Traced Particles: 2970

Measurement Mode: Size Distribution 2 Cycles

11 Positions, 2 Removed for Analysis

Analysis Parameters

Max Area: 1000, Min Area: 10, Min Brightness: 30



Peak Analysis (Concentration)

Diameter / nm	Particles/mL	FWHM / nm	Percentage
107.1	6.7E+6	41.2	98.1
213.7	4.5E+4	86.6	0.5
267.8	4.4E+4	10.2	0.2
292.2	1.7E+4	5.0	0.0
312.4	1.6E+4	10.1	0.1

X Values

	Number	Concentration	Volume
X10	82.4	82.4	94.7
X50	106.6	106.6	121.8
X90	137.6	137.6	198.9
Span	0.5	0.5	0.9
Mean	112.1	112.1	141.2
StdDev	26.4	26.4	60.7



Comment

(Signature)

Analyzed Video: Z:\ZetaViewResults\20220114\20220114_0001_ps_size.avi